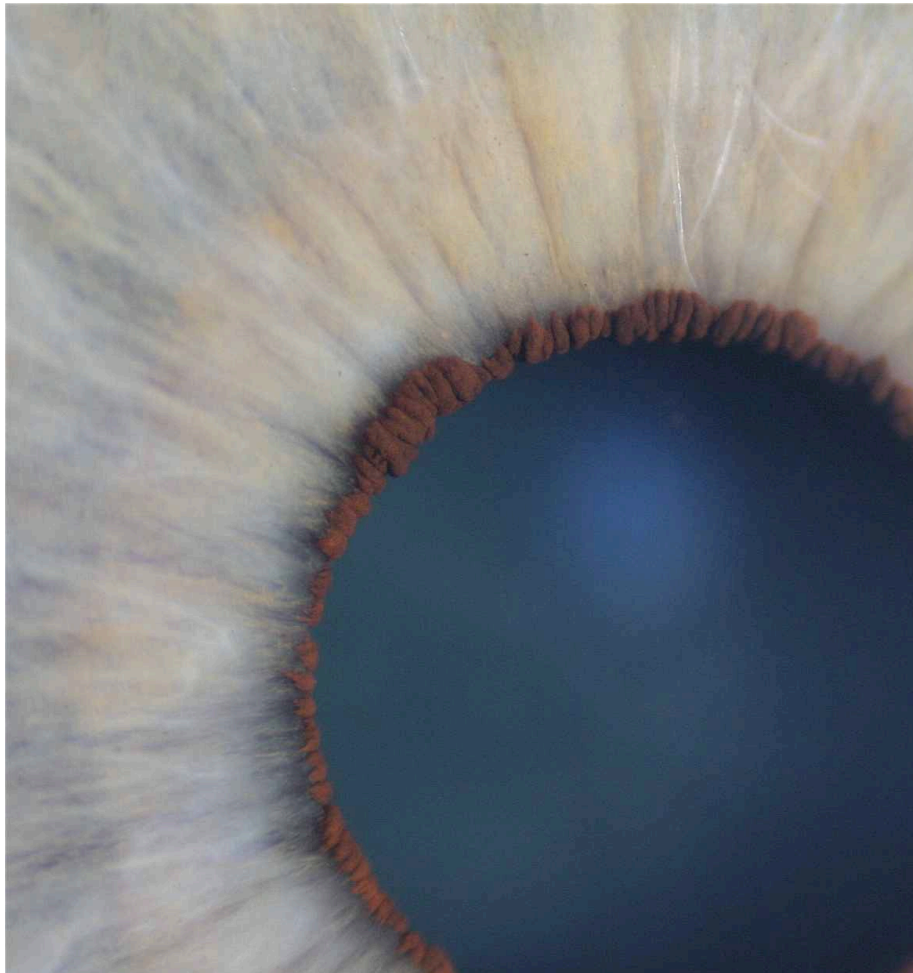


# John Andrews Iridology E-Newsletter No.3

April 2008

[www.johnandrewsiridology.net](http://www.johnandrewsiridology.net)

---



---

# Introduction - Welcome!

---

A very warm welcome to this - the third such e-newsletter - which is a sporadic entity, but is surely worth the wait? It is exciting to bring you much of the news involving Modern Iridology, John Andrews Iridology Research, Publications, Courses, Seminars, Future Webinars, Instructional CDs, Charts and the Advanced Iridology Research Journal and AIR programme.



*Pay attention to the location and type of lacuna/pigment & collarette structure - when we identify these together in the iris it is a body of evidence on many emerging levels of understanding beyond that of basic iris topography*

We have included the popular feature of an article or two and other snippets of useful information within the e-newsletter - this will continue with future editions. many thanks for your attention, continued support and participation - it is all very much appreciated.

## Competition

We are inviting submissions for the interpretation of the inner pupillary border structure(s) featured on the cover. we will publish the best, most accurate or entertaining replies. Please title your email subject as *E-newsletter No.3 Competition*. There are several different options available with confirmed clinical correlations for this patient - how else would you proceed?

The winner drawn will receive a free book or CD, to be announced in the next e-newsletter. Closing date is 20th July 2008.

Enjoy the e-newsletter!

# Modern Brown Iris Iridology

New Instructional CD available to fill the void in iridology reference material

**JOHN ANDREWS**

---

Finally we have in-depth coverage and clarity for the pure brown iris (Haematogenic iris) in iridology. As suggested in the E-Newsletter No.2, this Instructional CD, with amazing images of pure brown irises, helps to redress the imbalance in iridology literature and reference material. Indeed the pure brown iris, with the correct equipment and lighting, is the easiest iris type to assess with clarity.



*Brown Iris Images are featured in great detail on the CD*

The pure brown iris demonstrates many foundations of the modern iridology approach - that we have to accurately assess the integrity of the collarette on many different levels, inner pupillary border dynamics, the pupil dynamics & the new topography of the pupillary zone. Correlations and connections need to be made between all these areas.

## **Different Language Versions**

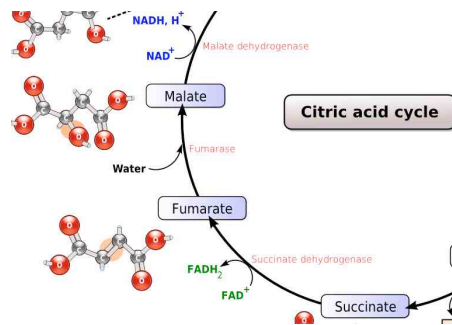
It is the intention to make to trial this CD later in 2008 as a Spanish language version, plus a Portuguese and other language versions, in addition to this English language volume.

Throughout this work you will be surprised by many new items of research with the pure brown iris and how overall assessment can be dynamic, accurate and a professional enhancement. Again, this latest addition to the Instructional CD catalogue is in *Powerpoint* format and is suitable for all those with *Microsoft Office* software on the Apple Mac or PC. It can also be imported into *Keynote* on Apple computers and viewed via that method.

# Krebs Cycle Tendencies & Modern Iridology

New forthcoming research in iris analysis by John Andrews

The Krebs Cycle or Citric acid Cycle of the cell is essential for energy production. There are many concrete clinical (physio-emotional) consequences of compromised enzymatic energy pathways of the Krebs cycle which according to new investigations with modern iridology research have helped advance yet simplify the identification of many different conditions from stress to allergies, toxicity through to organ/system hypofunction or neuromuscular pathology tendencies, plus many more. The full biological background and iris markers will all be published and presented at forthcoming events - this is an exciting expansion for iridology.



*Above & Below: Example of iris correlations to compromise in the cellular Krebs cycle*



## **John Andrews Advanced Iridology Seminars 2008**

**San Diego, California, USA 10th & 11th June 2008**

Registration: Micki Jones [MDJones@iridology.com](mailto:MDJones@iridology.com)

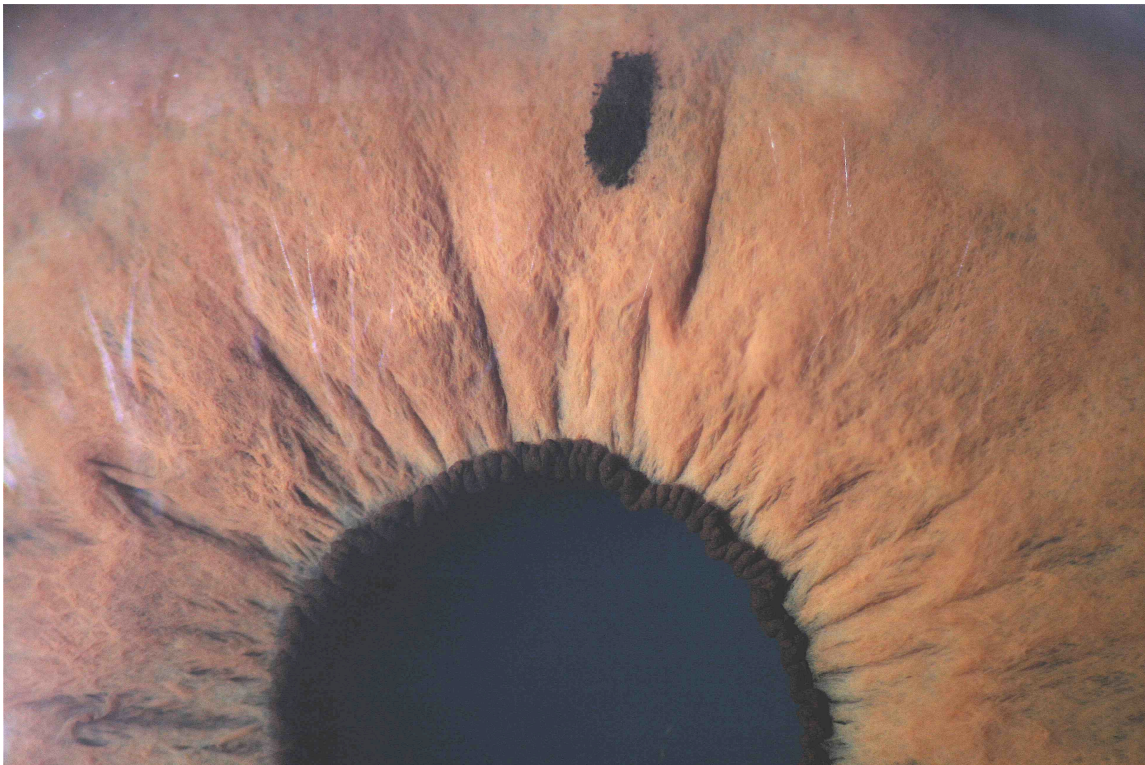
**Johannesburg, South Africa, 16th & 17th August 2008**

Registration: Dr Suzanne Haylett [info@irishealth.co.za](mailto:info@irishealth.co.za)

**Kilkenny, Ireland, 27th & 28th September 2008**

Registration: Jerry Gardner [jerrygardner@eircom.net](mailto:jerrygardner@eircom.net)

---



## Each International Advanced Iridology Seminar carries different content

The John Andrews approach in iridology is to aim for the highest standard of clinical accuracy & understanding. This approach helps to combine classical iridology with the arrival of modern technology and physiological knowledge. It is considered an advanced approach, but it is better described as the modern and holistic approach. As what we understand as being “advanced” today; will become the norm of tomorrow. The modern & advanced approach in iridology is a truly integrative approach and encompasses the following field and dynamics:

- Immunology
- Endocrinology
- Embryology
- Psychoneuroendocrinoimmunology (PNEI)
- Emotional Epigenetics
- Biogenetics
- Emotional Embryology
- Homotoxicology
- Functional Medicine
- Herbal Medicine
- Nutrition
- Physiological Regulating Medicine
- Bioenergetics

### Original Exciting Practical Material

John Andrews will help explain and empower the student or practitioner with practical tools and a clear, confident understanding for dynamic and competent application for all patient groups & demographics. Basically, you will be able to use the information covered the very next week within your practice.

Each seminar will feature truly original research material & findings delivered with clarity and educational, inspirational images of the eye, nature & the body. The most important iris, pupil & IPB signs will be covered in detail for full understanding in relation to iris analysis and also treatment protocols on many levels.

All participants receive a certificate of attendance & a CD of the presentations - so you will always have an accurate reference source of the material covered.

# Herbal Medicine & Modern Iridology Module

Leeds, England, 5th July 2008

with John Andrews

Download the PDF from the News page on the website

---



# New AIRJ Volume 7 Available

The new volume of the Advanced Iridology Research Journal is now available on CD via the website - click on the Publications section and then on Journal-AIRJ to order or subscribe.

THE NEXT VOLUME 8 IS DUE SUMMER 2008

---

Volume 7 of the Advanced Iridology Research Journal features research abstracts, work, iris photographs & articles from Dr Valery Serdyuk, Urologist & President of the Belarus Iridology Association, on two major pieces of recent modern medical iridology research - one study involved over 64,000 patients; Louis Cruz, Naturopath from USA with New Preliminary Research on Intestinal Polyps in the Brown Iris; Robert Van Der Hope, Australian Naturopath on Colour Perception & Vision in Iridology; Miriam Garber from Israel on new emotional research in Iridology; John Andrews from England; Claus Jahn, Heilpraktiker from Germany on the Spleen in Iridology, contemporary iridology research results from South Korea and much more.



*The Advanced Iridology Research Journal was first published in March 2000.*

Research in modern iridology practice, training and literature is of vital importance for the good of iridology progress, development for all nations, humanity and all forms of approaches in medicine. Knowledge of the latest research news, abstracts & findings are fundamental to the professional development of all those involved in iridology and related training, practice & tuition. Please support our work by subscribing today online via the Publications pages.

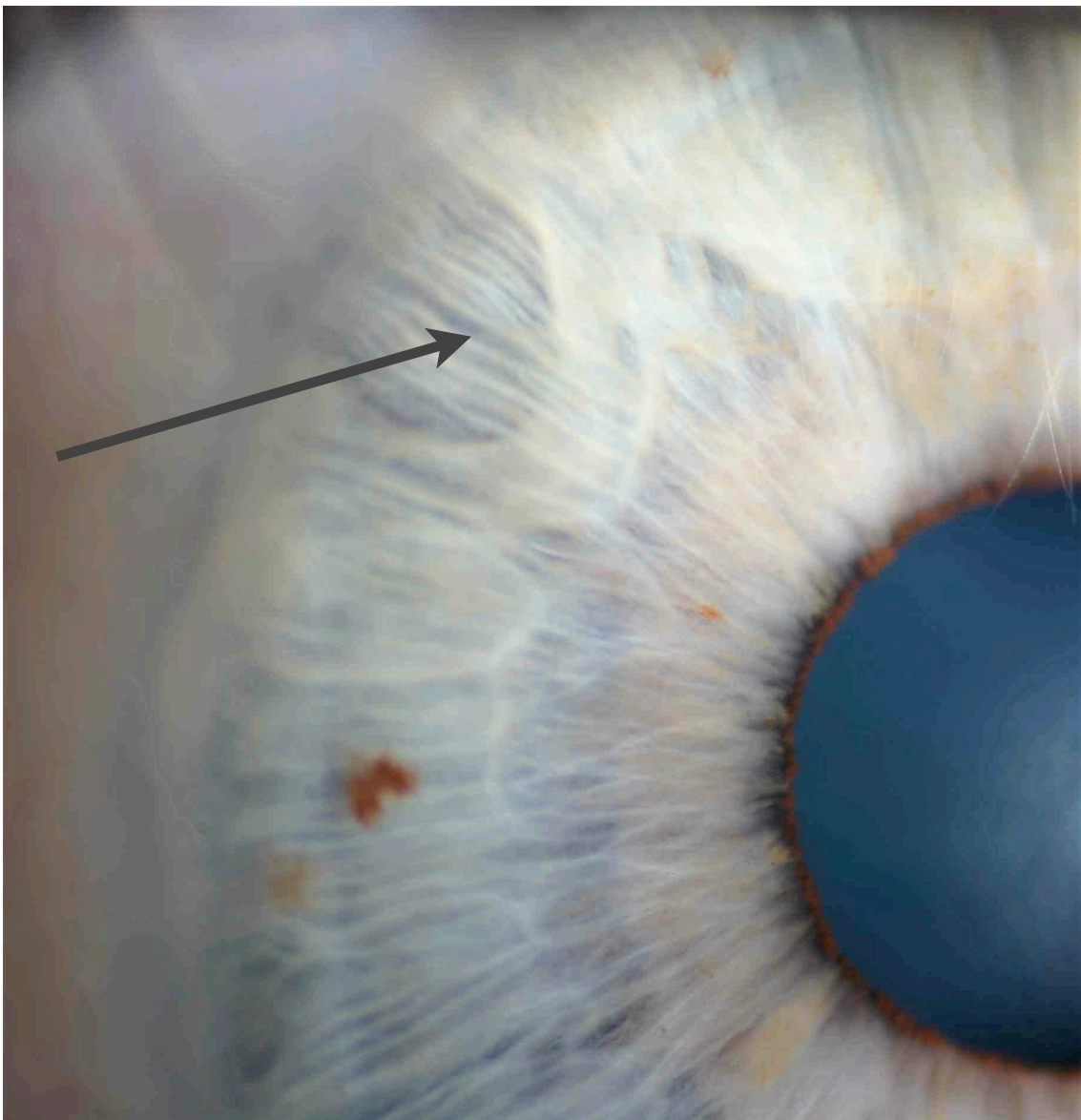
**Contributions are welcome - see AIRJ Editorial pages for acceptable formats.**



# The Negative Lacuna in Modern Iridology

**John Andrews**

---



## The Negative Lacuna in Modern Iridology

Not necessarily a really bad lacuna! This type of lacuna is easily identified against the general iris stroma; with the fibres running over the top of the closed or open lacuna morphology. It takes its name from a photograph taken in negative. It is a topolabile sign and indicates metabolic dysfunction in relation to elevated levels of uric acid irritating the heart, kidneys, joints and connective tissues, including the cellular interstitial fluid or mesenchymal matrix.

The negative lacuna can appear in any type of iris constitutional type or disposition. Many assume it is only apparent in the uric acid diathesis, but this is not the case, as it can appear in any type of iris. Whichever type of iris it is in, it's meaning is the same.

The lacuna is a genetic sign, a familial marker within the iris. Therefore the Negative Lacuna points to a genetic urea metabolism tendency, which could come reactive depending on alterations to stress levels, diet imbalance, liver or renal dysfunction. The stromal overlay of the Negative Lacuna has the potential to develop throughout a person's lifetime due to metabolic alterations influencing fibril elasticity and structure. A "pinching together" of the stroma can also appear in such cases as the Raised Stromal Collarette Mass covered in the updated & revised *Miscellaneous Iris Signs* chapter in the new *Iris & Pupillary Signs, 3rd Edition - Modern Iridology* book. This is identified in those experiencing a condition or episode with extreme pain such as uric acid kidney stone or appendicitis, etc.

Treatment for this type of signs can include medical monitoring as indicated via regular urine tests, plus suitable dietary restrictions to limit hepatic production of urea and metabolites. Botanical agents such as *Crateva nurvala cortex*, *Urtica folia* or *Boerhaavia* can all be used, together with *Lithiumeel*.

### Negative Lacuna Summary

The Negative Lacuna is not necessarily a really bad lacuna to have - it takes it's name from a photographic negative, as the iris fibres tend to run over the top of the structure.

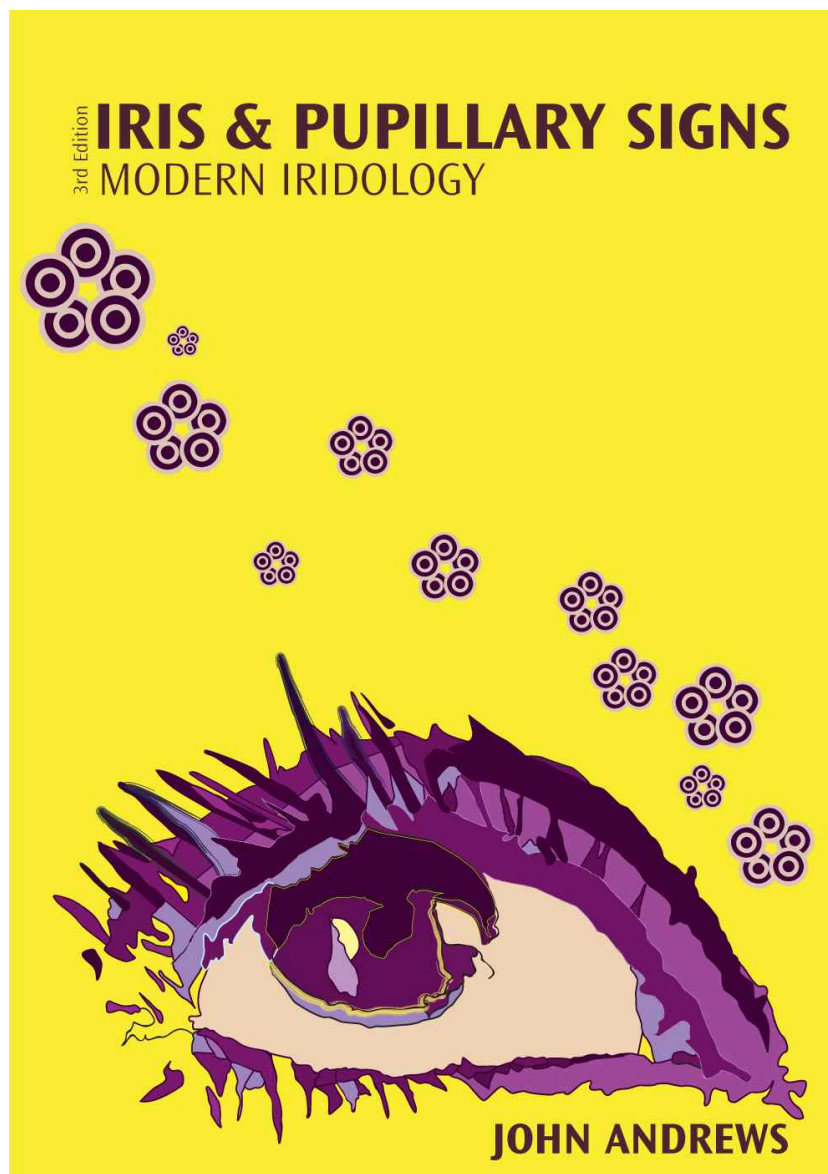
- Topolabile - Significant for what it is
- Indicative of elevated uric acid and associated metabolic dysfunction
- The raised urea/uric acid can overload the kidneys, heart, synovial fluid & connective tissues, blood sugar dysregulation symptoms can also develop
- Can appear in any iris type, not just the Hyperacid Diathesis
- Regular pH & urine tests required for all patients with the Negative Lacuna

---

# Extensive New Iridology Text Book with Iris Gallery CD by John Andrews

Order online at [www.johnandrewsiridology.net](http://www.johnandrewsiridology.net)

---



## **Iris & Pupillary Signs, 3rd Edition - Modern Iridology**

This new book from John Andrews has been extensively revised up to 280 pages. It comes complete with an Iris Gallery CD featuring over 150 high-resolution colour iris, pupil or IPB images to assist in identification, study & practice. It is critically-acclaimed on the international stage and is affectionately known as “the yellow book” and has become the standard text book for numerous courses around the world, as well as being the practitioners foremost port-of-call for reliable information and clear explanation.

It is an extensive modern iridology text book in a user-friendly style and is ideal for the serious student, practitioner, researcher, teacher and/or course provider of iridology.

It is the most complete text on modern iridology practice available in the English language and is a compendium of choice for clinical reference and constant inspiration due to the quantity & quality of information. It has over ten completely new chapters

### **Chapters include:**

The new book has revised, extended or just completely new extensive chapters covering the following: landmarks in the iris, different sections of the iris & pupil, modern iridology abbreviations, iris anatomy, physiology & function, iris colour & general disease tendencies, iridology definitions - a selection, pupil tonus, iris & pupillary oscillations, pupillary dynamics, topolabile & topostabile signs, the differentiation of lacunae, crypts & defects, development & significance of iris pigmentation, contraction furrows in iridology, brushfield's spots, mammilations, transversals, miscellaneous iris signs, integrity of the collarette, the axis in iridology, iris tonus, pupillary size and the influence on the pupil, classical topographical questions in modern iridology, the most important iris, pupillary & inner pupillary border signs, the inner pupillary border & morphologies, constitutional types, dispositions & diathesis, the pure brown iris in modern iridology, modern medical iridology research, conditions that cannot be identified with iridology, iridology contra-indications, dispelling myths and misconceptions in modern iridology, the iridology examination, why iris & pupillary signs?; cornea, conjunctiva & sclera signs, functional medicine in iridology, themes for emotional approaches in iridology, 8 page glossary, resources, bibliography and more.

### **Content**

The content of this book is based on the amalgamation of classical & new iridology work. It is based on extensive clinical experience and groundbreaking research, which combine to provide accuracy & clarity within Modern Iridology.

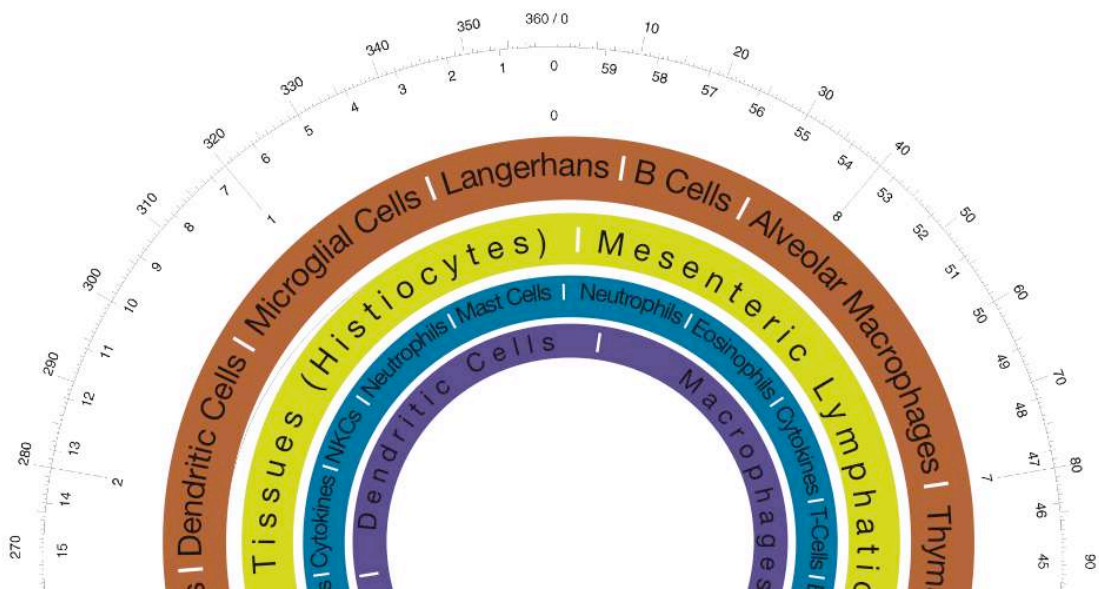
---

# Immune Cell Collarete & PNEI Foundation Iris Chart

Instructional CD & Laminated Chart Available May 2008

Original Iridology & PNEI Research by John Andrews

---



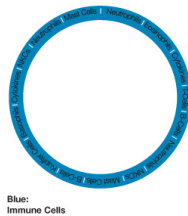
---

## Immune Cell Collarette & PNEI Foundation Iris Chart

Original Presentation of Research in Las Vegas, June 2007

---

The original *Immune Cell, Collarette & Psychoneuroendocrinology (PNEI) Foundation Chart* research material was first presented and explained in detail by John Andrews at the Advanced Iridology Research Seminar in Las Vegas, USA in June 2007. John's two day seminar was lavishly illustrated with the latest iris images and collarette research at the time - linking together many different exciting and dynamic facets new to modern iridology, but with a practical foundation for the practitioner, clinician and iridology instructor.



### *Blue Ring - The Immune Cell Activity, Tendency & PNEI Interactions Examples*

The Immune Cell Chart was released at this time and is now used with success by iridologists in over 20 countries around the world - if you were not able to attend the seminar in June 2007 this Instructional CD & Laminated Chart package is your way of accessing much of this original material and is essential for those incorporating immunology, PNEI, PNI, emotional dynamics in iridology, Time Risk (after Lo Rito), iris colourtherapy, colourpuncture, cranio-sacral therapy, flower remedies, homeopathy, homotoxicology, emotional embryology, Heart Math, counseling or NLP into their respective practices.

This chart integrates with John's *Emotional Dynamics of the Collarette Chart* that was first presented at the *Embryology & Iridology - New Topographical Research 3 Day Seminar* with Dr Daniele Lo Rito & John Andrews in Italy in May 2004. It will also combine with the new embryological topography of the pupillary zone. In addition to this the topographical understanding of the inner pupillary border plus the new Iris & IPB chart incorporating the extra-cellular matrix, DNA, the Cell & SNPs by John Andrews.

**5th Annual International  
Advanced Iridology Research Seminar  
at Butler House, Kilkenny, Ireland  
with John Andrews**

**New Research & Understanding of the Gastrointestinal System &  
Modern Iridology plus the Inner Pupillary Border**

**27th & 28th September 2008 Email [jerrygardner@eircom.net](mailto:jerrygardner@eircom.net)**

---



## MODERN IRIDOLOGY NEWS

---

### Comprehensive Books Index

A 40+ page comprehensive cross-referenced books index is now available free of charge as a PDF download (you will need an Adobe reader (Apple or PC) or Preview (Apple) capabilities) from the News section of the website as detailed at the foot of this page. The index covers all the material for John's first 4 books such as *Immunology & Iridology* (blue book), *Iris & Pupillary Signs, 2nd Edition* (yellow book), *Emotional Approaches in Iridology* (green book) & *Endocrinology & Iridology* (red book).

### John Andrews Books on CD

Due to the global demand for John's titles all of his books have currently sold out - except the new *Iris & Pupillary Signs, 3rd Edition* - however, they are now available as normal but in PDF format on CD via the website and at John Andrews Seminar.

### 2012 Iridology Book Project

It is predicted that between 2011 & 2012 there is going to be an enormous 1600+ page hard back tome published featuring the life's work of iridology, research & practice from John Andrews to that date and combining colour images for each point, therapies, plus all of the content of John's seven books, numerous charts and 26 instructional CDs up to that point. All work will be fully updated on all current books & CDs - watch this space!

### Instructional CDs

Instructional CDs are available via the website & John's seminars - new titles available soon. CDs are in Powerpoint format and are compatible with both Apple Mac & PC Microsoft Office software. The CDs can be bought individually or a complete series - you save money on buying a complete series - a saving of one CD worth £41.

### New Advanced Iridology Qualification - Adv.Ir Available Online

This is by international popular request. For those attending a certain number of qualifying John Andrews Advanced Iridology Seminars or similar two levels of examination are available online, as well as clinical assessment at the time of seminars or modules. Please visit the *Training* pages on the website

### Modern Iridology Correspondence Course

A future Modern Iridology Correspondence Course online will be available to all international students & practitioners from John Andrews - and will be launched in August 2008. We have many exciting ideas with course, including Instructional CDs, online tutorials, residential training & future Webinars, incorporating the latest *Keynote* and *iChat* technologies.